

Abbotsford: One with the Strength of Two

Presented by:
Jay Teichroeb
Director, Economic Development
& Intergovernmental Relations

I want to

here

relax
meet
learn
grow
build
dine
play
run
be
live
shop
work
love
create
explore
succeed

city in the country



THE VANCOUVER SUN

EDITION: www.vancouversun.com

SERIOUSLY WESTCOAST SINCE 1912

WEDNESDAY, MARCH 14, 2007

B.C. BOOMTOWNS AND BUSTS

As rural areas decline, B.C. has become the most urban province in Canada

BY FRANCES BULA
VANCOUVER

We think of ourselves as living in a province of forests and fish, sheep and ranches, wilderness and cities to match.

But we're really city and suburban people surrounded by mostly empty wilderness, according to the census snapshot from Statistics Canada.

B.C., which has led in the low-est urban growth in population, is the most urban province in the country, according to the 2006 census snapshot released Tuesday.

Only three per cent of its population now lives in rural areas, and retirement age, draining steadily away from the forests (having harvested most of the old-growth B.C. and the coastal coast).

The province has grown by 2.2 per cent, thanks mainly to immigration (that's outside Canada, since B.C. has the lowest birthrate in the country).

So, THEY'RE ALL IN

BUSTS
IN THE
FORESTS
AND MINING
TOWNS

BOOM
IN THE
OIL PATCH

BOOM IN THE
RETIREMENT AREAS

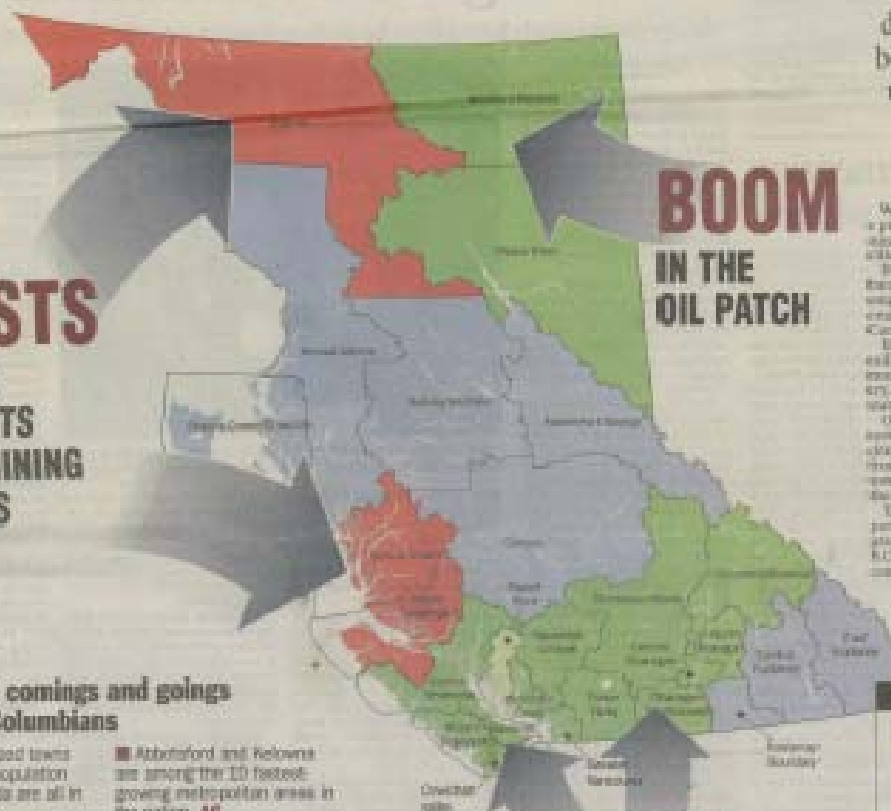
Inside: The comings and goings of British Columbians

■ The five mid-sized towns with the largest population declines in Canada are all in B.C., A4

■ Canada led all G-8 nations in population growth, a boom fueled by immigration and Alberta oil, A5

■ Abbotsford and Kelowna are among the 10 fastest-growing metropolitan areas in the nation, A6

■ Greater Vancouver grew at a rate of 60 new residents per day over the last five years, B1



POPULATION CHANGE

(Number of Census Divisions)

Green	+10% to +20%	10
Yellow	+0.2% to +10.9%	11
Blue	-20% to -25%	6
Red	Population loss of more than 25%	1

SOURCE: 2006 CENSUS OF POPULATION AND HOUSING, STATISTICS CANADA. ABSOLUTE GROWTH AND DECLINE: 1996-2006. ABSOLUTE PERCENTAGE: 2006-2007.

"Abbotsford. The Country's Fastest Growing Economy Last Year"

The Conference Board of Canada's Metropolitan Outlook – Summer 2005



"Abbotsford Leads Building Boom"

Vancouver Sun, Wednesday, December 7, 2005



"Small Business Booming in Abbotsford"

Bank of Montreal, October 11, 2005



"Abbotsford Hospital and Cancer Centre Named Top Partnership Project in North America"

Project Finance Magazine, March 9, 2005



"Cascade Aerospace of Abbotsford B.C. wins \$432.4 million C-130 Hercules contract."

October, 25, 2005



"Among Canada's CMA's, tax filers in Abbotsford BC, reported by far the highest median charitable donation at \$540."

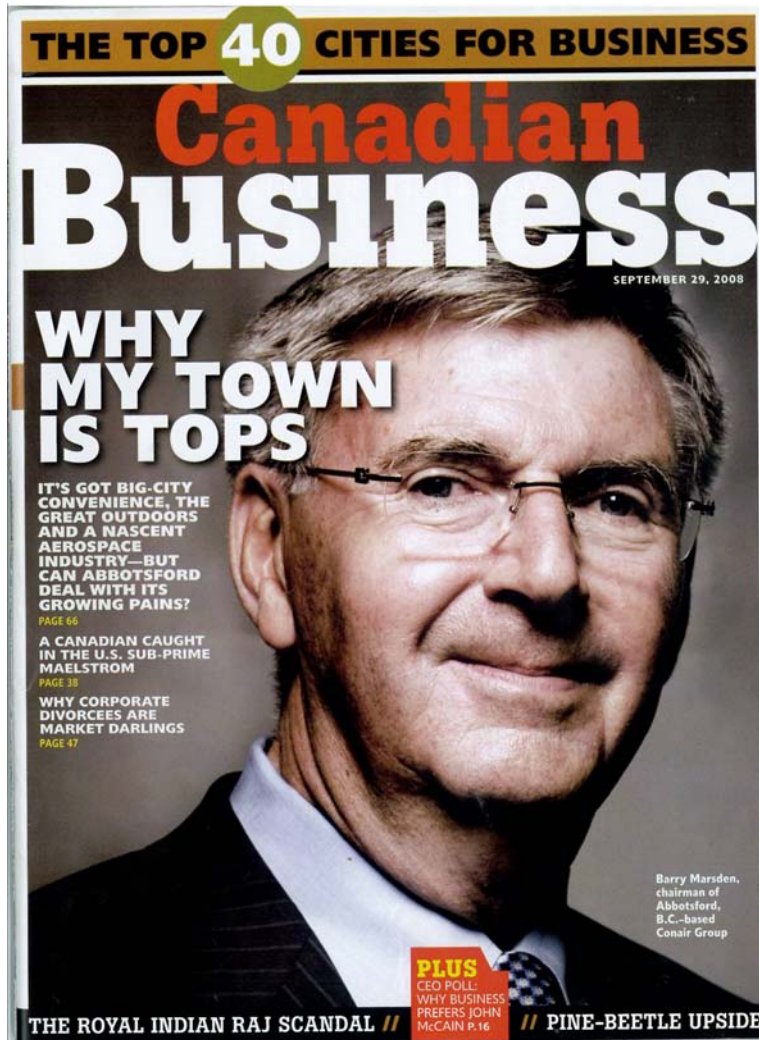
Statistics Canada, The Daily, November 1, 2005



"Abbotsford the best in B.C."

Vancouver Province, Friday, September 12, 2008





“But the most striking aspect of Abbotsford’s growth is the 49% average increase in commercial building permits during the past 3 years, greater than any other city in Canadian Business’s ranking.”

Canadian Business Magazine September 29, 2008



City at a Glance

- Population 135,000+; BC's fifth largest city
- Fastest growing Census Metropolitan Area from 1981 to 2001, with 107% work force growth

Statistics Canada 2005

- Highest increase in building permits in Canada

Statistics Canada 2005

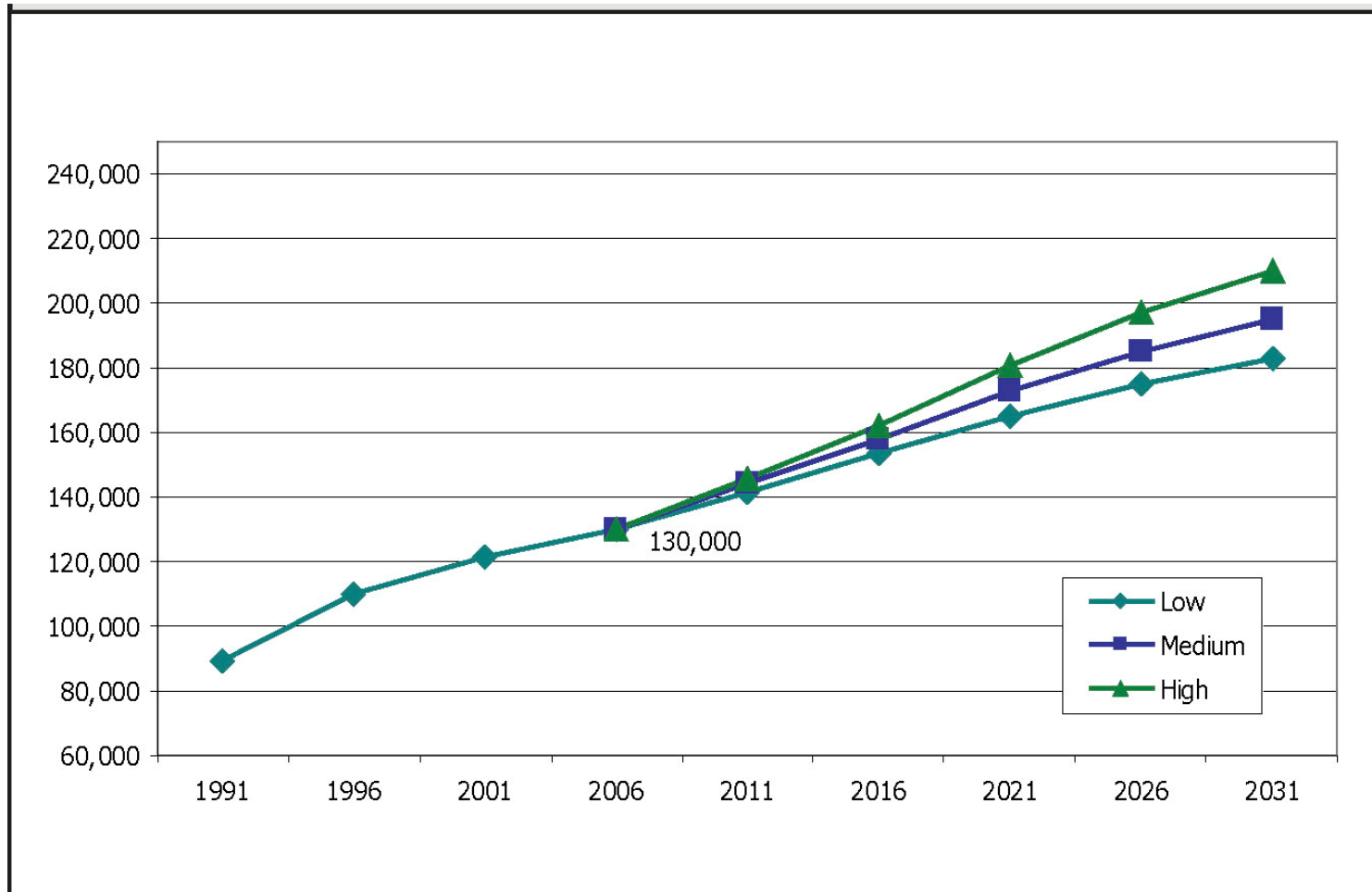


City at a Glance

- Third most diverse city in BC
- Most charitable city in Canada
Statistics Canada 2005
- Largest farm gate in the province
- Main economic drivers
 - Manufacturing
 - Aerospace
 - Agriculture
 - Healthcare



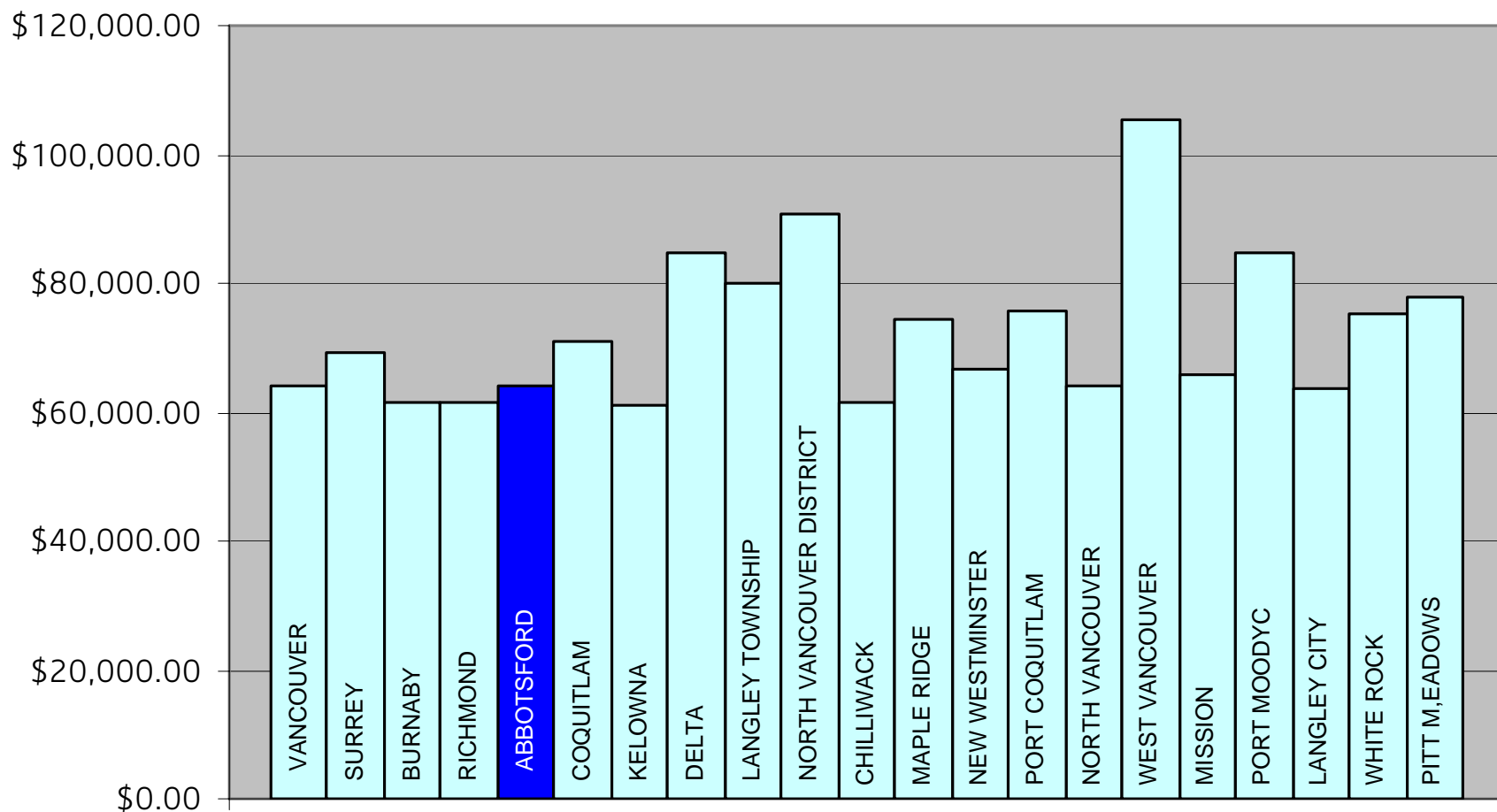
Population Estimates and Projections 1991 - 2031



Source: City of Abbotsford Development Services, 2007



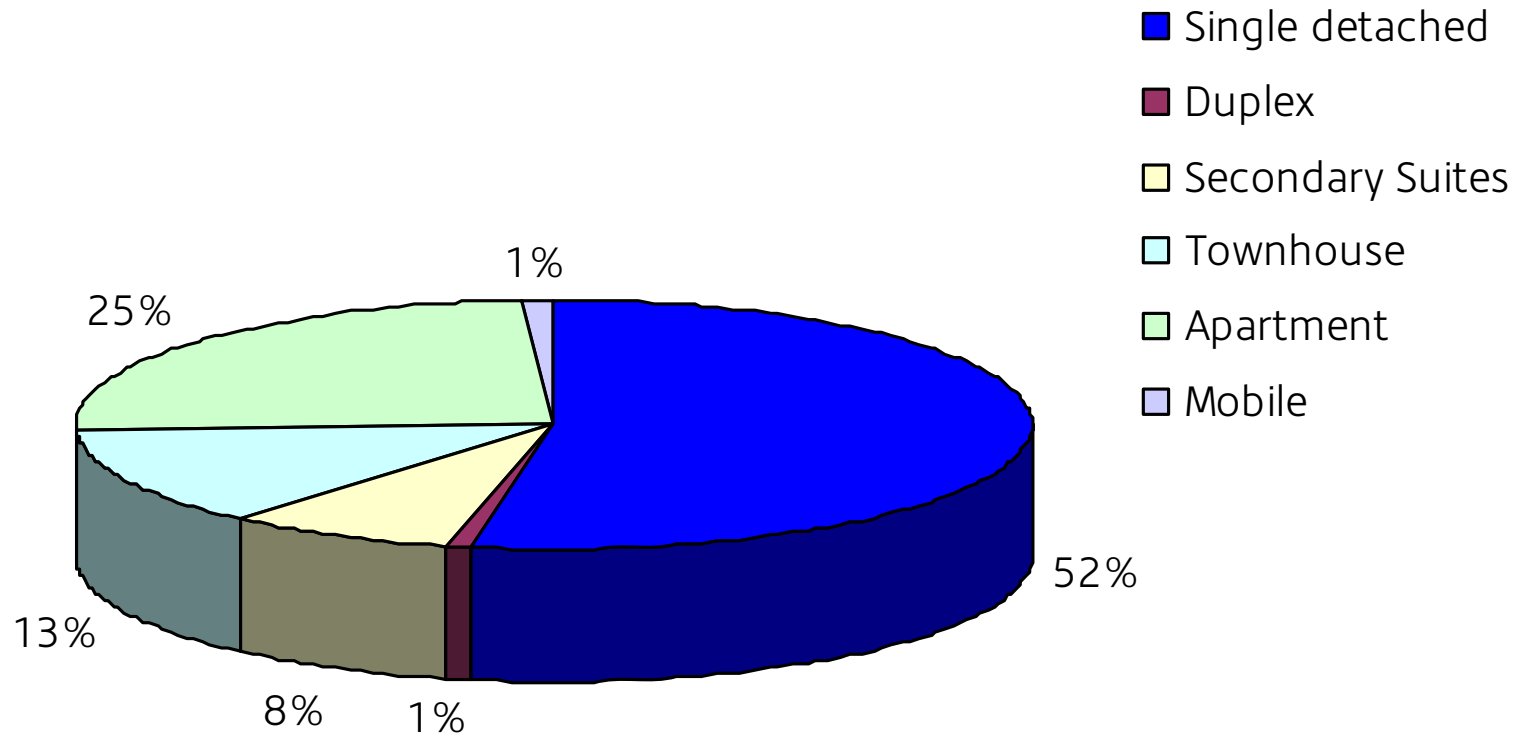
Median Household Income



2006 Census, Statistics Canada



Housing Inventory

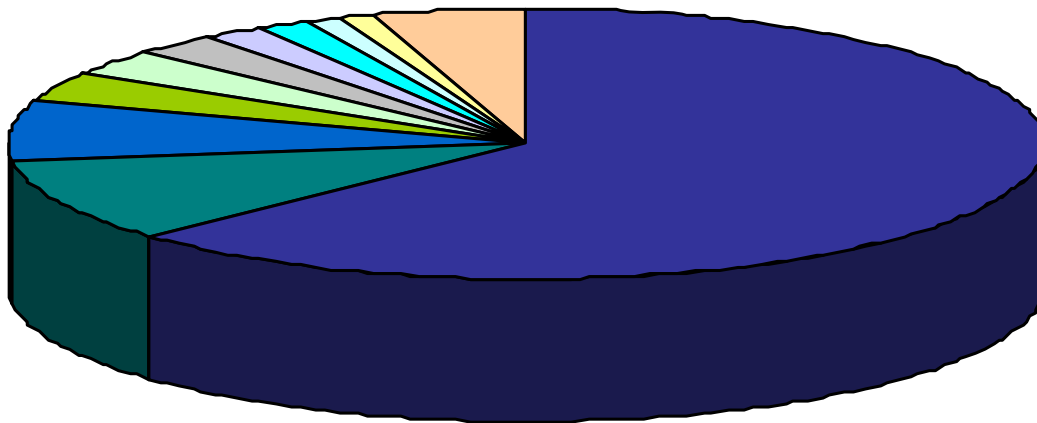


2007 City of Abbotsford, Development Services



Where We Work

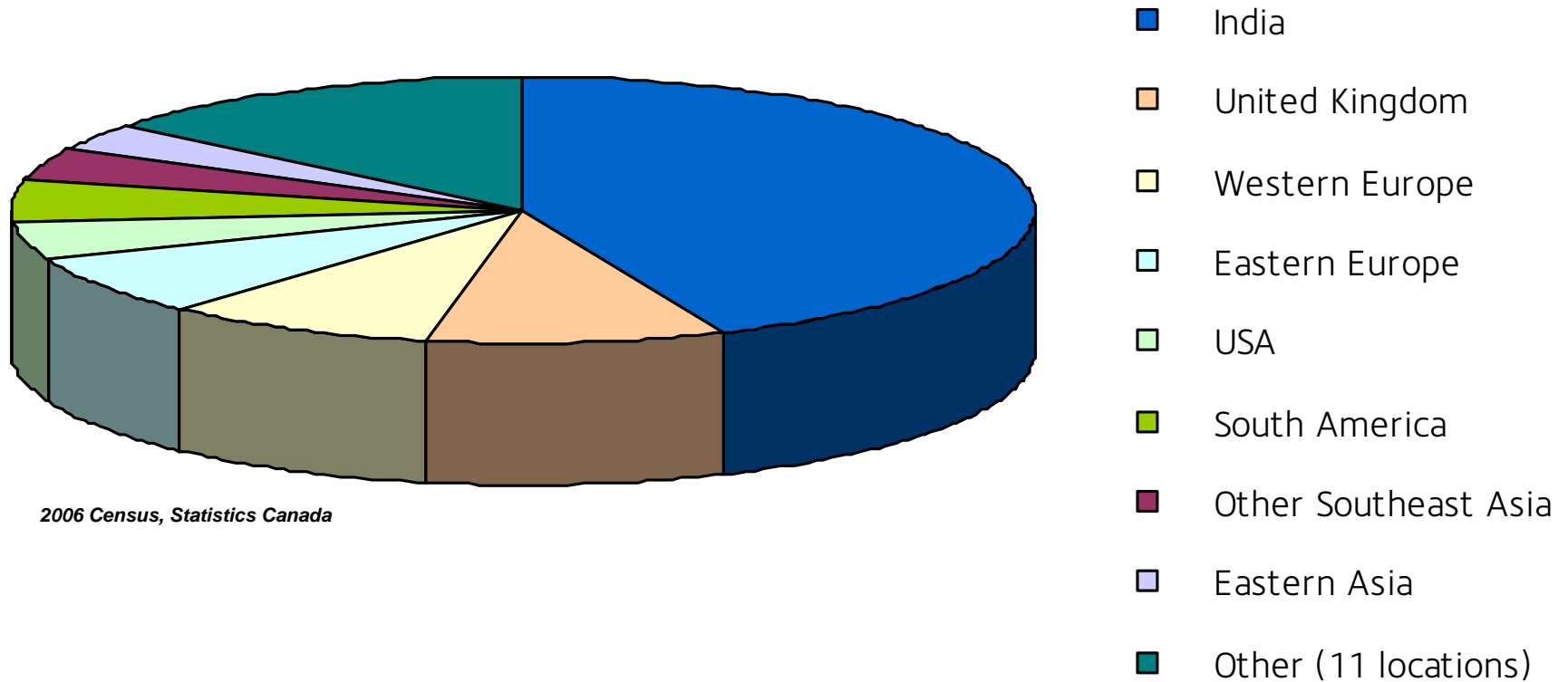
- Abbotsford 62.92%
- Langley (DM) 9.97%
- Surrey 7.06%
- Mission 3.68%
- Chilliwack 3.15%
- Langley (CY) 2.76%
- Vancouver 1.87%
- Burnaby 1.53%
- Maple Ridge 1.27%
- Richmond 1.16%
- Other (20 locations) 4.61%



2006 Census, Statistics Canada



Immigrant population – Region of birth



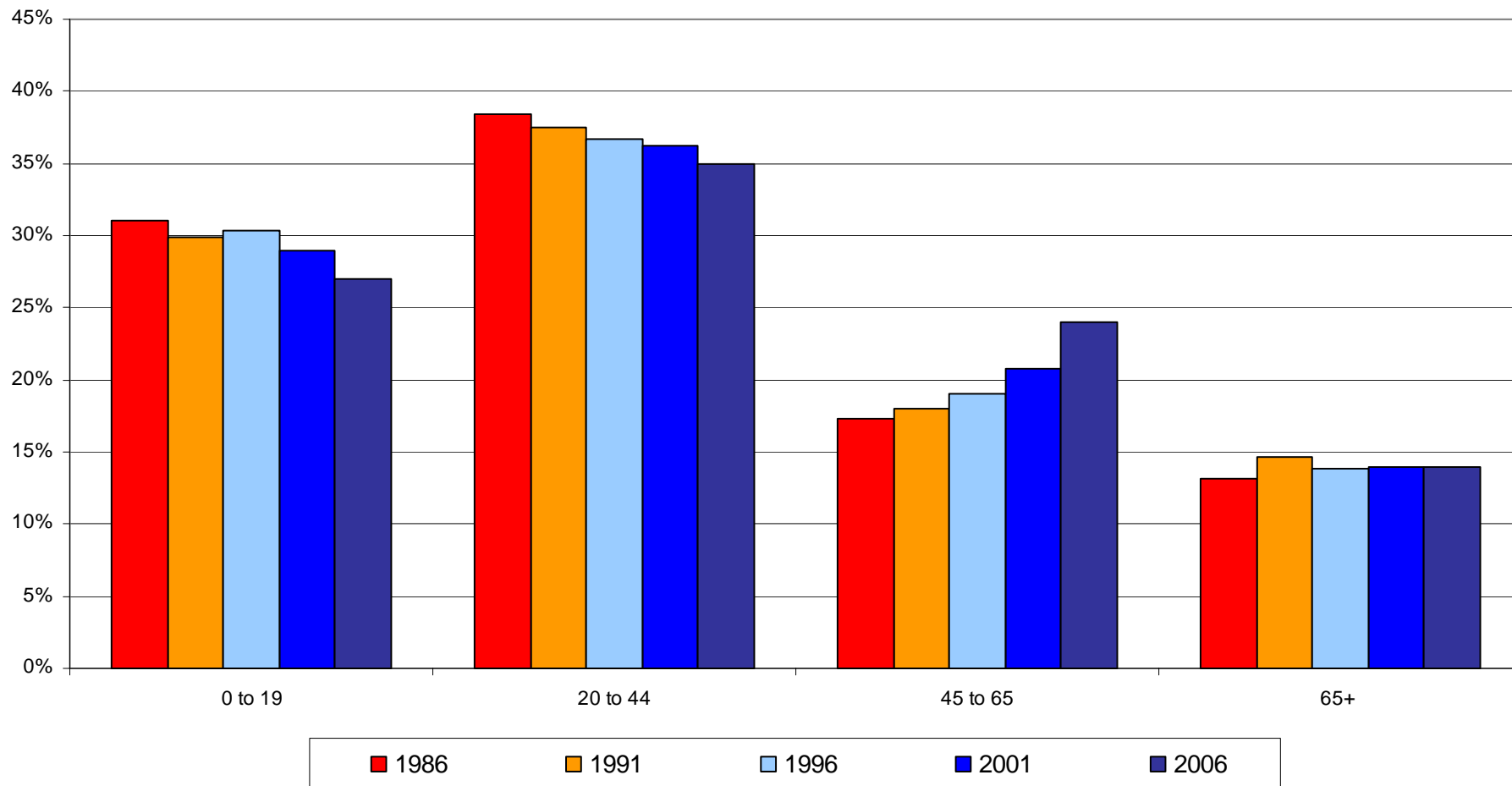
Language Spoken at Home

Language	Single Response	
	Population	% of population
English	96,230	78.76%
Panjabi (Punjabi)	16,630	13.61%
Korean	1,220	1.00%
German	1,195	0.98%
Chinese languages	1,105	0.90%
Vietnamese	745	0.61%
Spanish	590	0.48%
French	290	0.24%
Russian	195	0.16%
Dutch	190	0.16%
Other	3,785	3.10%
39 different languages spoken at home		

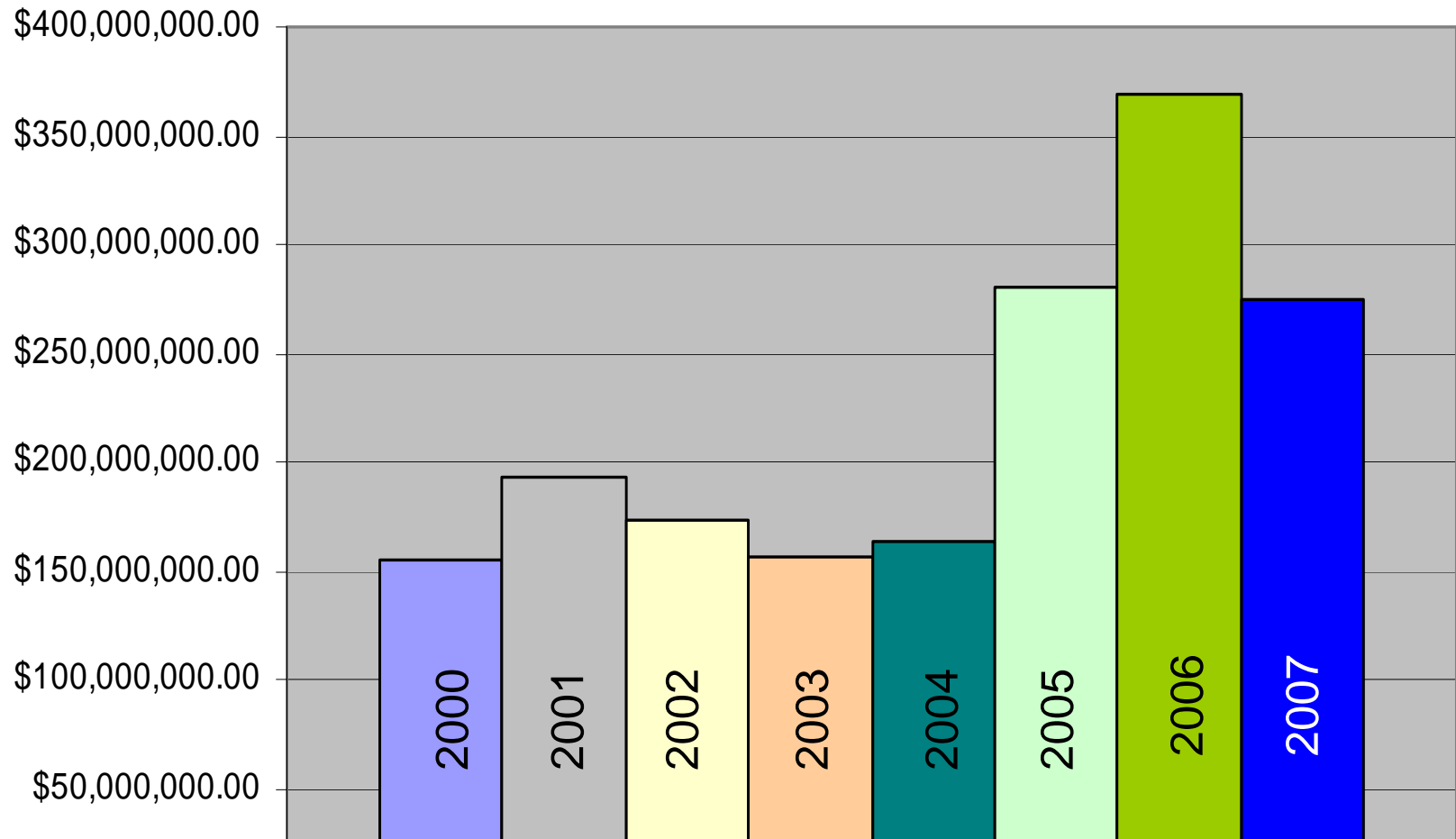
2006 Census, Statistics Canada



Changing Population Distribution: 1986 - 2006



Development Activity



2007 City of Abbotsford, Development Services



Labour Force Characteristics

ALL INDUSTRIES	62,030	
Manufacturing	7,590	12.2%
Retail Trade	6,550	10.6%
Construction	5,925	9.6%
Agriculture, Forestry, Fishing & Hunting	5,875	9.5%
Health Care and Social Assistance	5,570	9.9%
Educational Services	3,910	6.3%
Transportation & Warehousing	3,795	6.1%
Other Services (except Public Administration)	3,790	6.1%
Accommodation & Food Services	3,785	6.1%
Wholesale Trade	2,860	4.6%
Professional, Scientific & Technical Services	2,680	4.3%
Public Administration	2,505	4.0%
Admin & Support, Waste Management & Remed Services	2,270	3.7%
Finance and Insurance	1,850	3.0%
Real Estate and Rental and Leasing	1,030	1.7%
Information and Cultural Industries	920	1.5%
Arts, Entertainment & Recreation	565	0.9%
Utilities	265	0.4%
Mining, Oil & Gas Extraction	220	0.4%
Management of Companies and Enterprises	60	0.1%

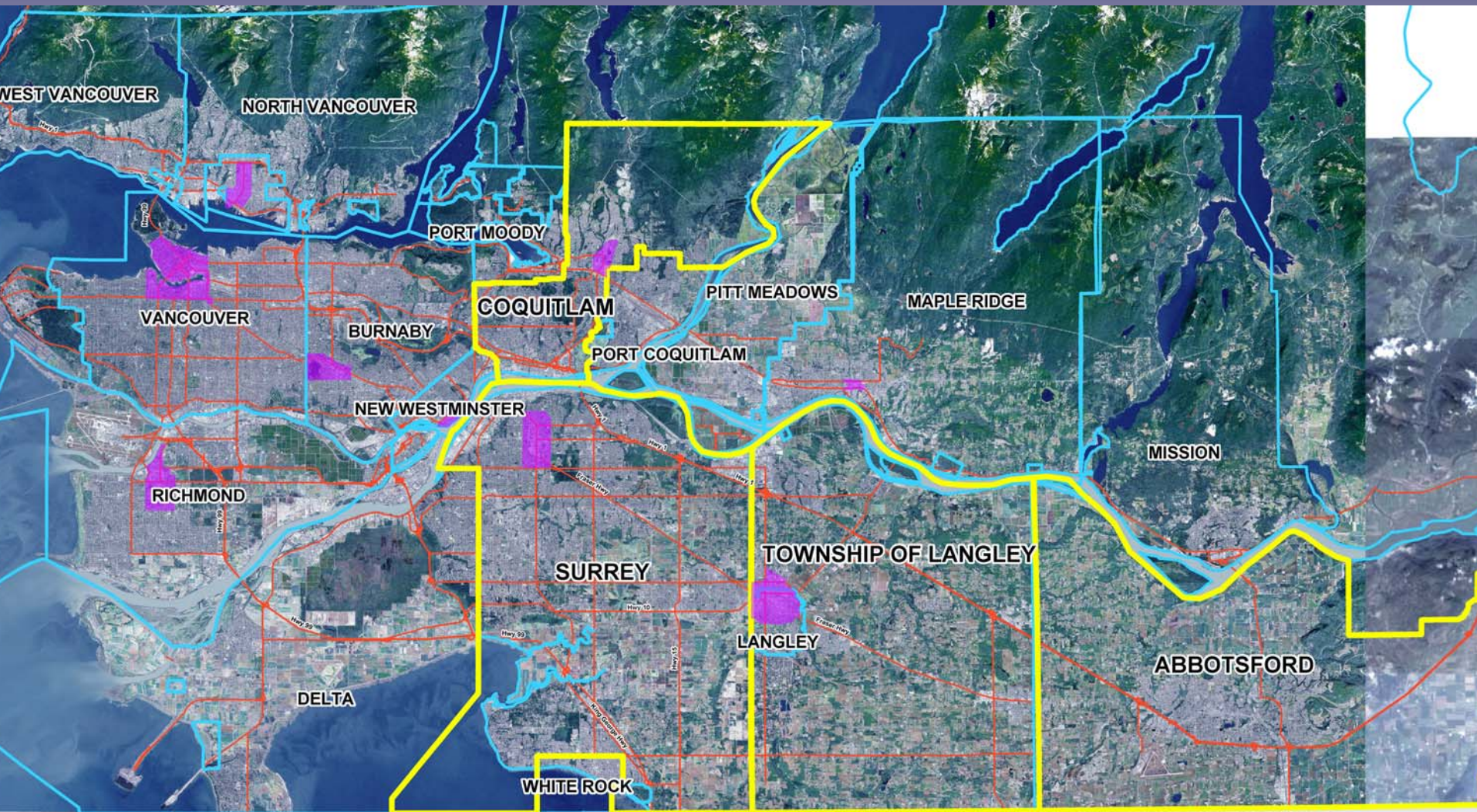
2006 Census, Statistics Canada



Opportunity

- Communities south of the Fraser are absorbing the highest percentage of Lower Mainland Growth.





Opportunity

- Well diversified economy



Opportunity

- Strong transportation network
 - International Airport
 - Border Crossings
 - Link to North Shore
 - Provincial highway



Opportunity

- City in the Country Plan
 - 178.5 hectares of land released from the Agricultural Land Reserve



Opportunity

- High quality of life
 - Extensive trail systems for biking and hiking
 - 420 hectares of parkland
 - Home to 1 of 3 Olympic size ice sheets in BC
 - Rich in cultural and recreational amenities
 - Regional retail hub of the Fraser Valley



Opportunity

- New medical facility opened August 2008



Opportunity

- University status granted April 2008



The Future

- Three new civic facilities



**The Reach: Gallery,
Museum Abbotsford**
opened September 2008



**Abbotsford Recreation
Centre**
opening October 2008



**Abbotsford
Entertainment & Sports
Centre**
opening Spring 2009



The Future

- Rapidly expanding airline traffic and services to serve the Fraser Valley



The Future

- ALR land exclusion will support rapidly expanding industrial base.



The Future

- Continued Industry Growth
 - Manufacturing
 - Aerospace



The Future

- BC's largest farmgate community





I want to be here

relax
meet
learn
grow
build
dine
play
run
live
shop
work
love
create
explore
succeed

city in the country

